

The Edge Series 2 12 x 30 minutes

Where science meets science fiction and imagination becomes reality. Can science answer the big questions about human nature and the universe?

e The Edge

The Edge focuses on cutting-edge scientific achievements. Accessible, entertaining and highly visual.



AIDS - Truth or Dare The scourge of AIDS has already cost millions of lives around the world, but the origins of this modern plague remain a mystery. What are the lessons that can be learnt from this human tragedy? What hope can science offer to millions of sufferers?



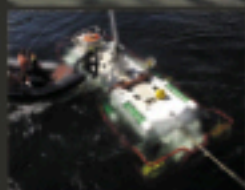
Bottling the Sun As traditional fuel supplies threaten to run dry, nuclear fusion has become the Holy Grail of energy production. It promises to replicate the power of the Sun here on Earth. This programme looks at new developments, which are bringing fusion closer to practical reality.



The Bug Detectives Telling the fascinating story behind the real science featured in the movie Silence of the Lambs - forensic entomology. This new breed of scientific expertise can call on the evidence provided by insect behaviour and infestation to establish vital clues in criminal investigation. Featuring revealing investigations into real crimes.



Driven to Destruction Behind the glamorous façade of the Monte Carlo Rally, there are teams of engineers and technicians who toil to produce cars with a competitive advantage. Often this can only be measured in fractions of a second. The modern Rally car is a masterpiece of engineering technology.



Escape from the Deep After the tragic loss of the Kursk, Escape from the Deep looks at the science of submarine rescue. A new generation of submersible craft can offer beleaguered submariners their only hope of rescue from the ocean depths.



The Evolution Revolution The integration of man with machine is common currency in science fiction, but at the dawn of the Twenty-First Century the cyborg is becoming a practical reality. The question now is how far we are prepared to join our biological selves to the computers and machines we have created?

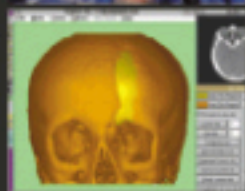
The Fragile Reef Coinciding with the publication of the world's first Atlas of Coral Reefs, this film explores their fragile ecology and incredible biodiversity. Careless development, overfishing and tourism are destroying these natural areas. Countries such as Egypt and Tanzania are working with the scientific community to develop strategies to combat these disastrous effects.



Hand Stitched by Robots With the development of surgical robots the surgeon of the future may well be a computer operated machine. This film explores the development of surgical robots as they are currently employed in world centres of excellence at Aston and Bristol Universities, and looks to the future of robotic surgery.

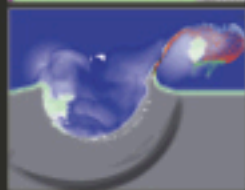


Inside Out 3D imaging is transforming the practise of modern medicine. Reconstructive surgery, the treatment of advanced tumours, and aortic aneurisms are now all benefiting from the impact of this amazing new technology.



The Man Who Found What Fell To Earth Planetary scientist Phil Bland is on a quest to find the remnants of a gigantic meteor which struck Argentina 5,000 years ago. If he succeeds in locating the impact site on the wind swept pampas it will be the discovery of a major planetary event, which would have impacted during a period of human habitation.

Meteor Chasers Astronomy is the last area of modern science in which amateurs can make an important contribution. Meteor Chasers looks at the vital research now being undertaken by teams of amateur astronomers around the world. They are tracking the path of Earth bound meteors and exploring the most distant reaches of the universe.



Secrets of the Clouds World renowned evolutionary biologist Bill Hamilton stands beside Darwin as one of the subjects most original thinkers. He has transformed our view of evolution and man's place within the global ecology. Secrets of the Clouds profiles this remarkable scientist and explores his unique contribution to our understanding of nature.

Language versions:
English, Mandarin Chinese,
Russian and International
For broadcast and non-broadcast
use worldwide



production:



distribution:



London Television Service

21-25 St Anne's Court

London W1F 0BJ

Telephone +44 (0) 20 7434 1121

Fax +44 (0) 20 7734 0619

E-mail its@londonstv.com

<http://www.londonstv.com>